

Immagini



Oceano mondiale

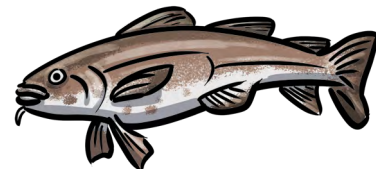
Gli esseri viventi degli oceani

Pesci

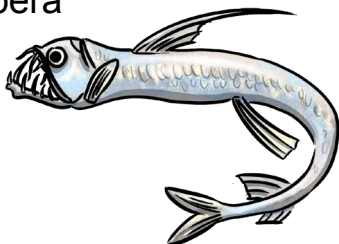
Pesce remo
o regaleco



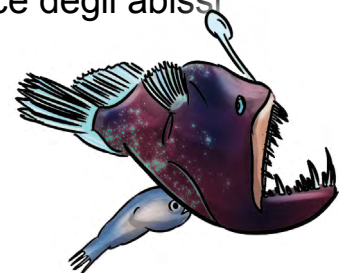
Merluzzo



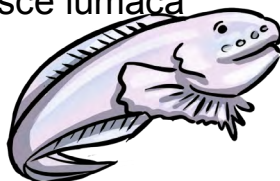
Pesce vipera



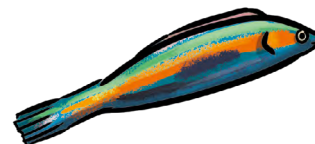
Rana pescatrice degli abissi



Liparidi "pesce lumaca"



Donzella



Hoplostethus atlanticus
"Pesce specchio"



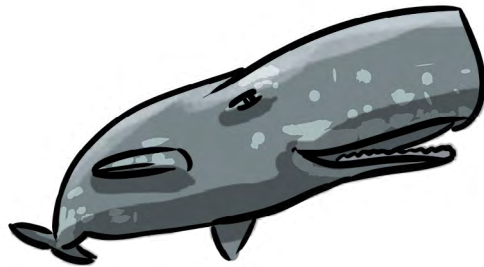
Pesce lanterna



Gli esseri viventi degli oceani

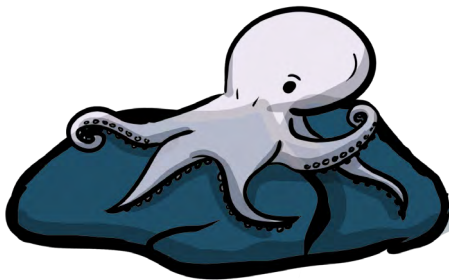
Mammiferi

Capodoglio



Cefalopodi

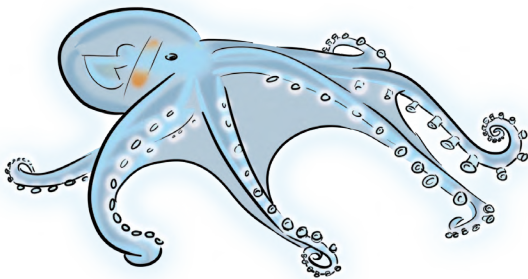
Polpo Casper



Lycoteuthis lorigera



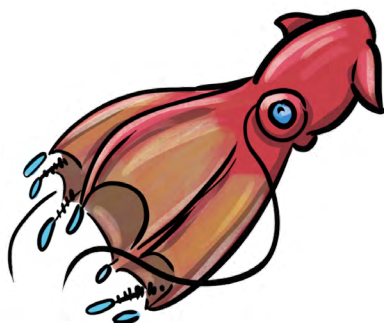
Vitreledonella richardi "Polpo di vetro"



Watasenia scintillans "Calamaro lucciola"



Calamaro vampiro



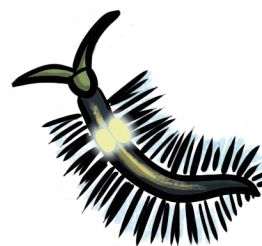
Gli esseri viventi degli oceani

Anellidi

Verme tubo gigante



Swima bombiviridis
"Verme bombardiere"



Verme Osedax



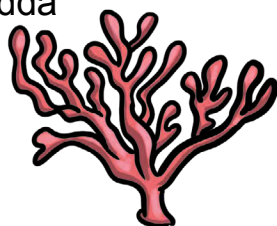
Artropodi

Eurythenes plasticus, un minuscolo crostaceo degli abissi



Cnidari

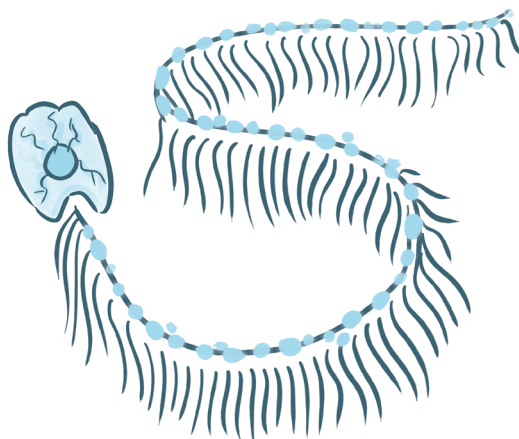
Corallo d'acqua fredda



Scifomedusa



Sifonofori



Gli esseri viventi degli oceani

Agnati

Missina



Plancton (vari organismi microscopici)

Fitoplancton
(piante)

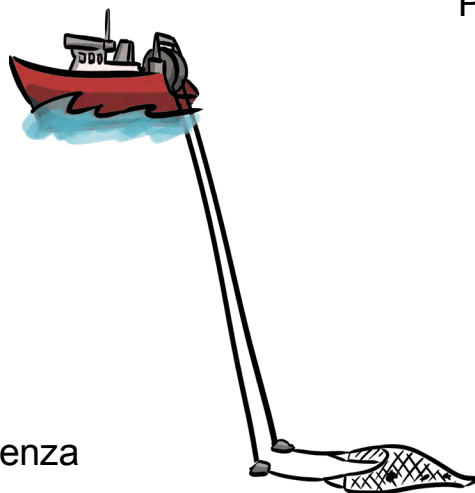


Zooplancton
(animali)

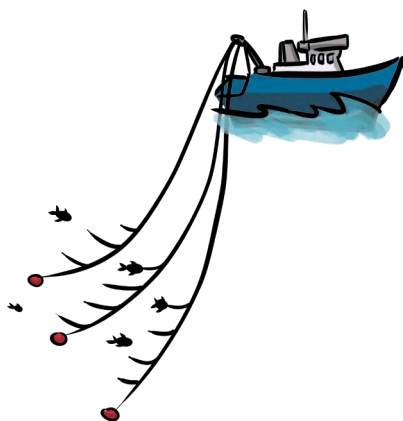


Umani e oceano

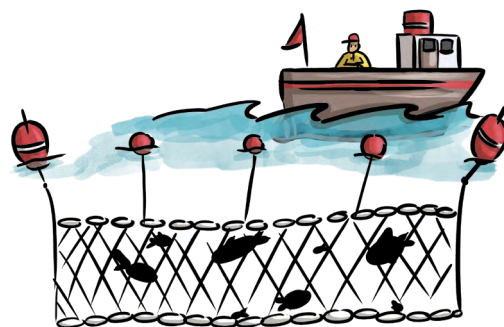
Peschiereccio
a strascico



Pesca con la lenza



Pescatore con la rete da posta



Umani e oceano

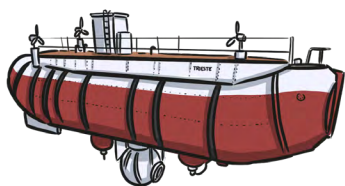
Nave da carico



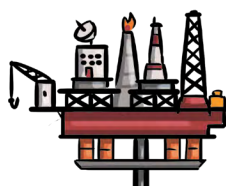
Azienda mineraria dei fondali oceanici



Sottomarino (Trieste)



Piattaforma petrolifera

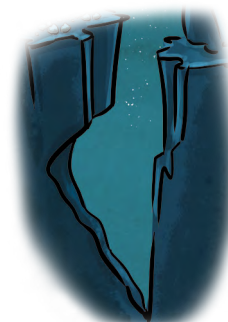


Paesaggio dei fondali oceanici

Bocca idrotermale o fumarola nera



Fossa



Montagna sottomarina



Noduli di manganese



Piana abissale

